

PHÉP KIỂM CHI BÌNH PHƯƠNG (Chi square test)

PHÉP KIỂM CHI BÌNH PHƯƠNG

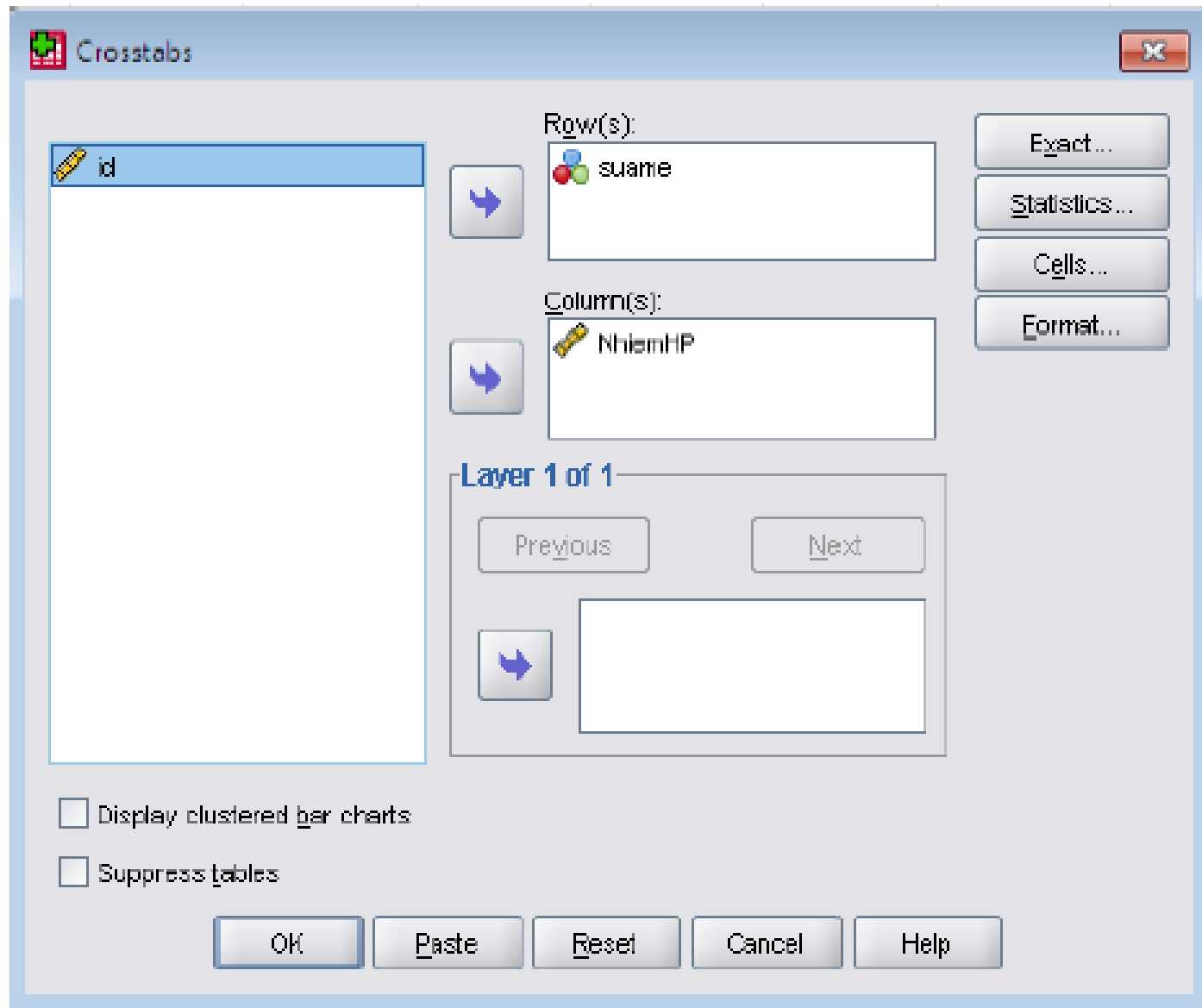
*Untitled2 [DataSet3] - SPSS Data Editor

File Edit View Data Transform Analyze

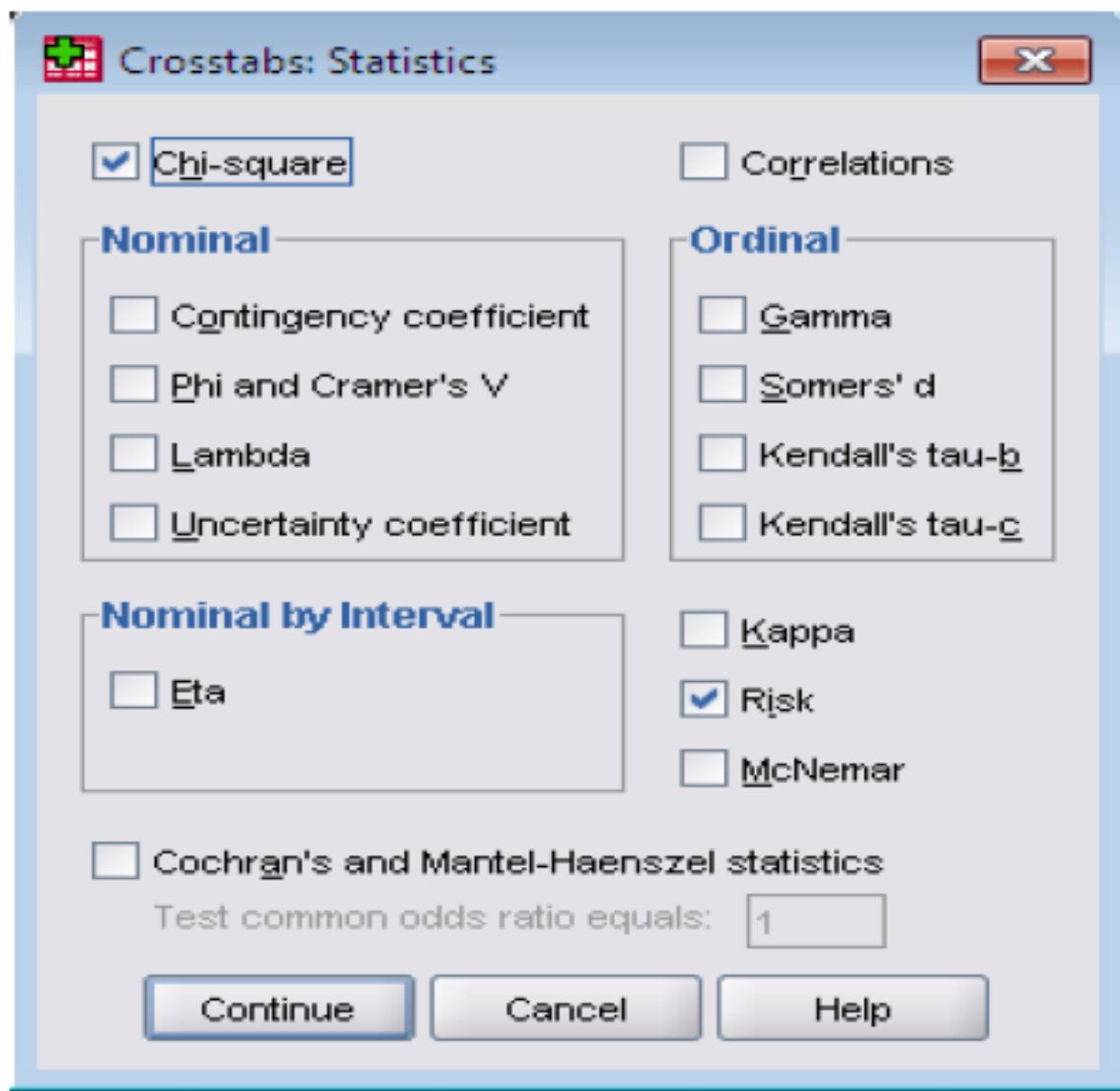
33 : id

	id	suame	NhiemHP
1	1	1	0
2	2	1	0
3	3	1	0
4	4	1	0
5	5	1	0
6	6	1	0
7	7	1	0
8	8	1	0
9	9	1	0
10	10	1	0
11	11	1	0
12	12	1	0
13	13	1	0
14	14	1	1
15	15	1	1
16	16	0	0

PHÉP KIỂM CHI BÌNH PHƯƠNG



PHÉP KIỂM CHI BÌNH PHƯƠNG

A screenshot of the 'Crosstabs: Statistics' dialog box in a statistical software package. The window title is 'Crosstabs: Statistics' and it has a close button (X) in the top right corner. The dialog is organized into several sections with checkboxes for various statistical tests. The 'Chi-square' checkbox is checked. Under the 'Nominal' section, four options are listed: 'Contingency coefficient', 'Phi and Cramer's V', 'Lambda', and 'Uncertainty coefficient', all of which are unchecked. Under the 'Ordinal' section, four options are listed: 'Gamma', 'Somers' d', 'Kendall's tau-b', and 'Kendall's tau-c', all of which are unchecked. Under the 'Nominal by Interval' section, one option is listed: 'Eta', which is unchecked. In the lower right area, 'Kappa' is unchecked, 'Risk' is checked, and 'McNemar' is unchecked. At the bottom, there is a checkbox for 'Cochran's and Mantel-Haenszel statistics' which is unchecked, followed by a text label 'Test common odds ratio equals:' and a text input field containing the value '1'. At the very bottom, there are three buttons: 'Continue', 'Cancel', and 'Help'.

Crosstabs: Statistics

Chi-square

Correlations

Nominal

Contingency coefficient

Phi and Cramer's V

Lambda

Uncertainty coefficient

Ordinal

Gamma

Somers' d

Kendall's tau-b

Kendall's tau-c

Nominal by Interval

Eta

Kappa

Risk

McNemar

Cochran's and Mantel-Haenszel statistics

Test common odds ratio equals:

PHÉP KIỂM CHI BÌNH PHƯƠNG

suame * NhiemHP Crosstabulation

			NhiemHP		Total
			0	1	
suame	0	Count	5	10	15
		% within Nhiem-HP	27.8%	83.3%	50.0%
	1	Count	13	2	15
		% within Nhiem-HP	72.2%	16.7%	50.0%
Total		Count	18	12	30
		% within Nhiem-HP	100.0%	100.0%	100.0%

Chi-Square Tests

	Value	df	Asymp. Sig. (2-sided)	Exact Sig. (2-sided)	Exact Sig. (1-sided)
Pearson Chi-Square	8.889 ^a	1	.003		
Continuity Correction ^b	6.806	1	.003		
Likelihood Ratio	9.505	1	.002		
Fisher's Exact Test				.008	.004
Linear-by-Linear Association	8.593	1	.003		
N of Valid Cases ^b	30				

PHÉP KIỂM CHI BÌNH PHƯƠNG

SANHNON.sav [DataSet1] - SPSS Data Editor

File Edit View Data Transform Analyze Graphs Utilities Add-ons Window Help

SVV 13196

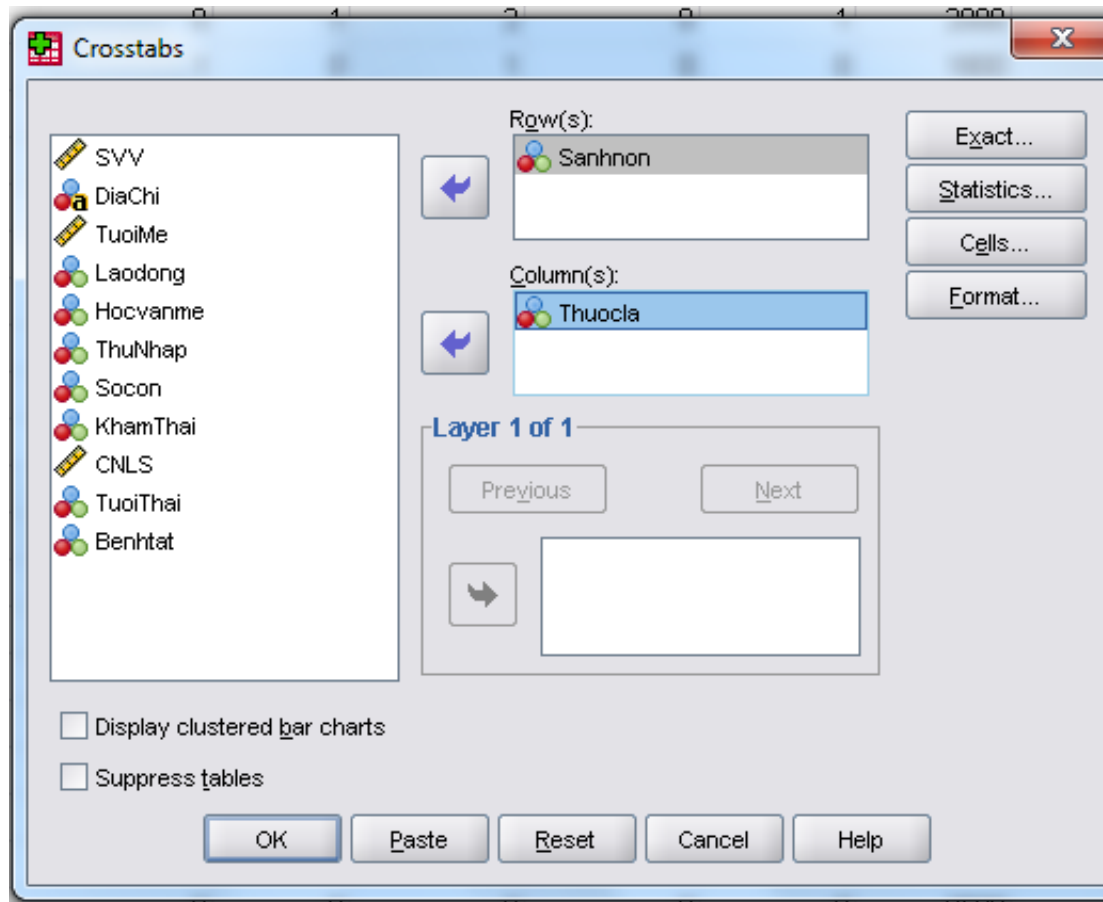
	SVV	DiaChi
1	13196	vinht...
2	13718	thotn...
3	23271	vinht...
4	16830	vong...
5	1723	lapvo...
6	6470	mybi...
7	16878	vinhh...
8	5191	phut...
9	16714	thotn...
10	3697	myp...
11	13819	thotn...
12	4794	long...
13	5275	phuh...
14	16154	vinht...
15	10435	lapvo...
16	14247	lapvo...
17	6748	cand...
18	13681	than...
19	15163	binh...

Analyze

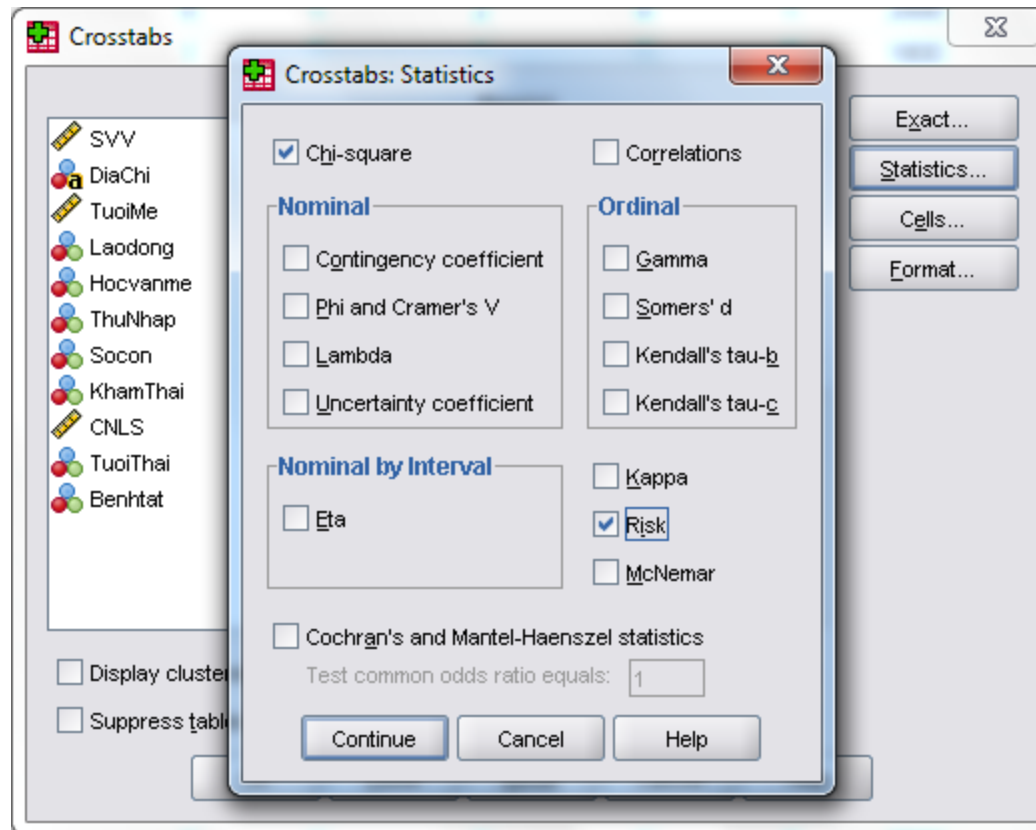
- Reports
- Descriptive Statistics
 - 123 Frequencies...
 - Descriptives...
 - Explore...
 - Crosstabs...
 - 1/2 Ratio...
 - P-P Plots...
 - Q-Q Plots...
- Tables
- Compare Means
- General Linear Model
- Generalized Linear Models
- Mixed Models
- Correlate
- Regression
- Loglinear
- Neural Networks
- Classify
- Data Reduction
- Scale
- Nonparametric Tests
- Time Series
- Survival
- Missing Value Analysis...
- Multiple Response
- Complex Samples
- Quality Control
- ROC Curve...

0	1
1	0
0	1
1	0
1	0
0	1
1	0
0	0
1	1
0	0
1	1
1	0
1	0
1	0
1	0

PHÉP KIỂM CHI BÌNH PHƯƠNG



PHÉP KIỂM CHI BÌNH PHƯƠNG



PHÉP KIỂM CHI BÌNH PHƯƠNG

Sanhnon * Thuocla Crosstabulation

Count

		Thuocla		Total
		0	1	
Sanhnon	0	46	59	105
	1	14	88	102
Total		60	147	207

Chi-Square Tests

	Value	df	Asymp. Sig. (2-sided)	Exact Sig. (2-sided)	Exact Sig. (1-sided)
Pearson Chi-Square	22.749 ^a	1	.000		
Continuity Correction ^b	21.311	1	.000		
Likelihood Ratio	23.700	1	.000		
Fisher's Exact Test				.000	.000
Linear-by-Linear Association	22.639	1	.000		
N of Valid Cases ^b	207				

a. 0 cells (.0%) have expected count less than 5. The minimum expected count is 29.57.

b. Computed only for a 2x2 table

Risk Estimate

	Value	95% Confidence Interval	
		Lower	Upper
Odds Ratio for Sanhnon (0 / 1)	4.901	2.475	9.704
For cohort Thuocla = 0	3.192	1.874	5.437
For cohort Thuocla = 1	.651	.541	.784
N of Valid Cases	207		

PHÉP KIỂM CHI BÌNH PHƯƠNG

Chi-Square Tests

			Asymp. Sig.	Exact Sig. (2-sided)	Exact Sig. (1-sided)		
LOANGXUONG * NHOMTUOI Crosstabulation							
Pearson			NHOMTUOI				Total
			<40	40-49	50-59	>60	
Conti	LOANGXUONG >-1	Count	9	20	18	2	49
		% within NHOMTUOI	56.2%	50.0%	25.7%	2.6%	24.1%
Likeli	-1.1_-2.5	Count	7	19	29	15	70
		% within NHOMTUOI	43.8%	47.5%	41.4%	19.5%	34.5%
Fishe	<-2.5	Count	0	1	23	60	84
		% within NHOMTUOI	.0%	2.5%	32.9%	77.9%	41.4%
Linea	Asso	Count	16	40	70	77	203
		% within NHOMTUOI	100.0%	100.0%	100.0%	100.0%	100.0%
N of \	Total	Count	16	40	70	77	203
		% within NHOMTUOI	100.0%	100.0%	100.0%	100.0%	100.0%

.000

a.

b.

Chi-Square Tests

	Value	df	Asymp. Sig. (2-sided)
Pearson Chi-Square	88.472 ^a	6	.000
Likelihood Ratio	106.464	6	.000
Linear-by-Linear Association	77.949	1	.000
N of Valid Cases	203		

a. 1 cells (8.3%) have expected count less than 5. The minimum expected count is 3.86.

Odds (0 / 1)

For cohort Thuocla = 0

3.192

1.874

5.437

For cohort Thuocla = 1

.651

.541

.784

N of Valid Cases

207

BÀI TẬP: LOÃNG XƯƠNG

LOANGXUONG * ANCHAY Crosstabulation

			ANCHAY		Total
			1	2	
LOANGXUONG	>-1	Count	6	43	49
		% within ANCHAY	18.8%	25.1%	24.1%
	-1.1_-2.5	Count	12	58	70
		% within ANCHAY	37.5%	33.9%	34.5%
	≤-2.5	Count	14	70	84
		% within ANCHAY	43.8%	40.9%	41.4%
Total	Count	32	171	203	
	% within ANCHAY	100.0%	100.0%	100.0%	

Chi-Square Tests

	Value	df	Asymp. Sig. (2-sided)
Pearson Chi-Square	.609 ^a	2	.738
Likelihood Ratio	.637	2	.727
N of Valid Cases	203		

a. 0 cells (.0%) have expected count less than 5. The minimum expected count is 7.72.

BÀI TẬP: LOÃNG XƯƠNG

LOANGXUONG * NHOMTUOI Crosstabulation

		NHOMTUOI				Total	
		<40	40-49	50-59	>60		
LOANGXUONG	>-1	Count	9	20	18	2	49
		% within NHOMTUOI	56.2%	50.0%	25.7%	2.6%	24.1%
	-1.1_-2.5	Count	7	19	29	15	70
		% within NHOMTUOI	43.8%	47.5%	41.4%	19.5%	34.5%
	<-2.5	Count	0	1	23	60	84
		% within NHOMTUOI	.0%	2.5%	32.9%	77.9%	41.4%
Total	Count	16	40	70	77	203	
	% within NHOMTUOI	100.0%	100.0%	100.0%	100.0%	100.0%	

Chi-Square Tests

	Value	df	Asymp. Sig. (2-sided)
Pearson Chi-Square	88.472 ^a	6	.000
Likelihood Ratio	106.464	6	.000
Linear-by-Linear Association	77.949	1	.000
N of Valid Cases	203		

a. 1 cells (8.3%) have expected count less than 5. The minimum expected count is 3.86.

BẢNG TÍNH ONLINE

Now over
15 million
uses!



Statistics Calculators

version 3.0
BETA

[DanielSoper.com](#) > Statistics Calculators

New taste!

Limited
1,000
sets

ジャパネスク
Japanesque



Tweet

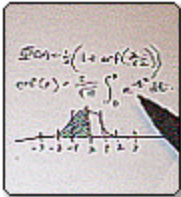


+1



Recommend

<159



Free Statistics Calculators!

Welcome to version 3.0 of the Free Statistics Calculators website! These statistics calculators are free to be used by anyone in the research community at large. They are offered humbly in the hope that they will contribute in some small way to the advancement of science and the betterment of mankind. I hope you find them useful!

The statistics calculators are organized into the 26 categories shown below. Clicking on a category name will display a list of calculators available for that category.

▶ Analysis of Variance (ANOVA)

▶ Beta Function

▶ Binomial Distribution

▶ Chi-Square Distribution

▶ Confidence Intervals

▶ Contingency Tables

▶ Correlations

ODDS RATIO ONLINE

vassarstats.net/odds2x2.html



Data Entry

		X		Totals	Expected Cell Frequencies per Null Hypothesis	
		0	1			
Y	1	<input type="text"/>	<input type="text"/>	<input type="text"/>	<input type="text"/>	<input type="text"/>
	0	<input type="text"/>	<input type="text"/>		<input type="text"/>	<input type="text"/>
Totals		<input type="text"/>	<input type="text"/>	<input type="text"/>	<input type="text"/>	<input type="text"/>

	Rate	Risk Ratio	Odds	Odds Ratio	Log Odds
Group 1	<input type="text"/>	<input type="text"/>	<input type="text"/>	<input type="text"/>	<input type="text"/>
Group 2	<input type="text"/>	<input type="text"/>	<input type="text"/>	<input type="text"/>	<input type="text"/>

Rate = proportion in group with condition present

Risk Ratio = Rate[1]/Rate[2]

Odds[1] = present[1]/absent[1]

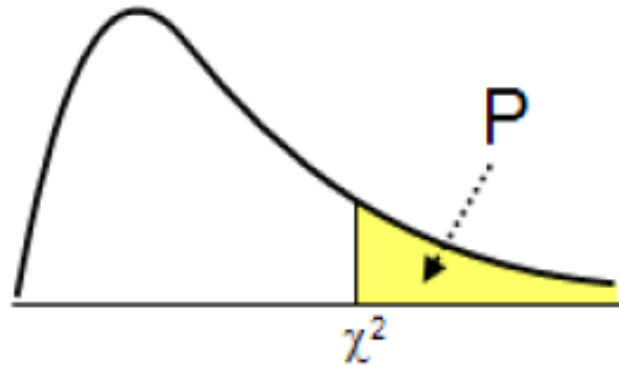
Odds[2] = present[2]/absent[2]

Odds Ratio = Odds[1]/Odds[2]

Log Odds = natural logarithm of Odds Ratio

	.95 Confidence Intervals		
	Observed	Lower Limit	Upper Limit
Risk Ratio	<input type="text"/>	<input type="text"/>	<input type="text"/>
Odds Ratio	<input type="text"/>	<input type="text"/>	<input type="text"/>

Bảng tính giá trị tới hạn của phân phối χ^2



DF	p=0.05	p=0.01
1	3.84	6.64
2	5.99	9.21
3	7.82	11.34
4	9.49	13.28
5	11.07	15.09
6	12.59	16.81