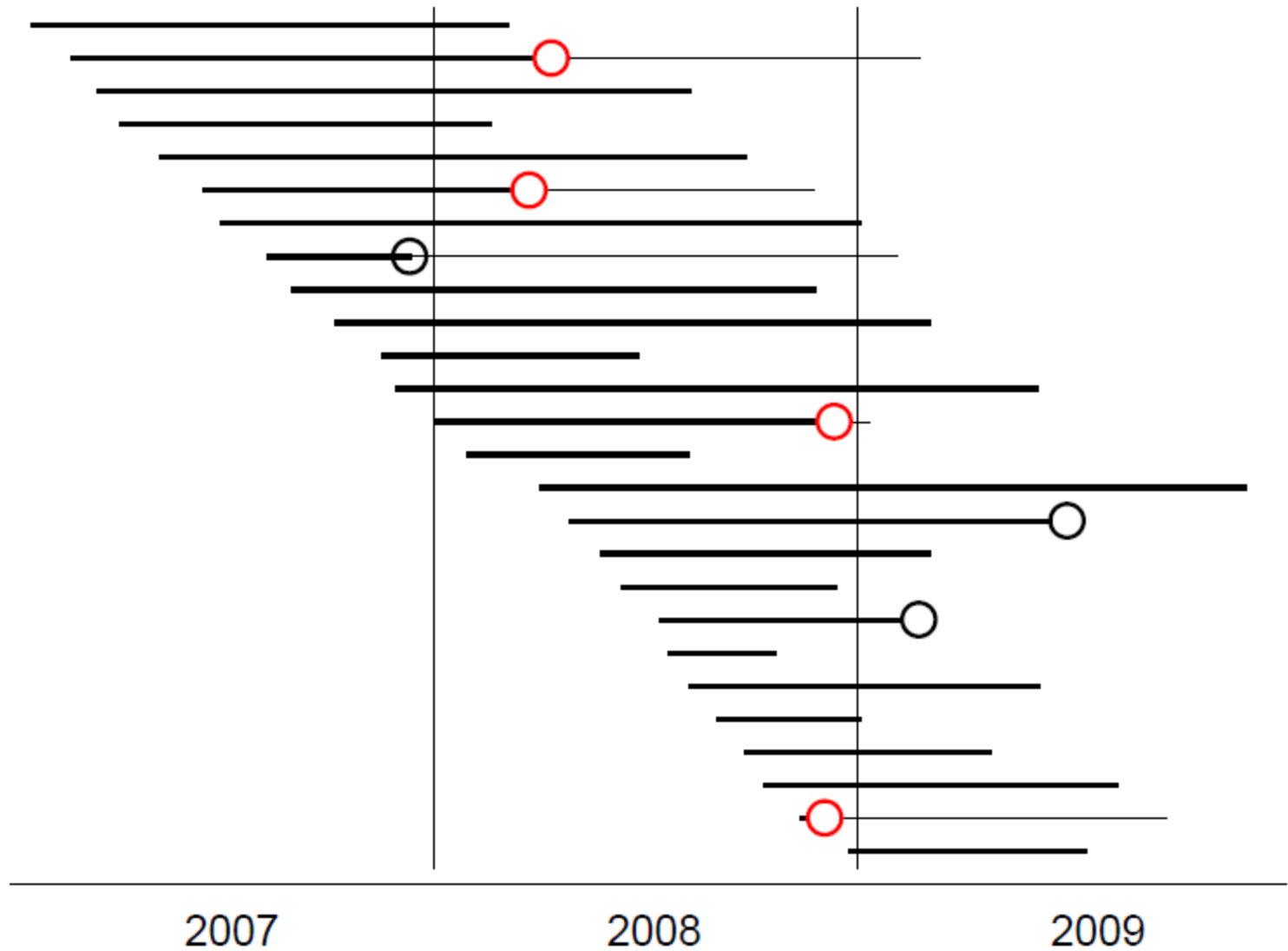


PHÂN TÍCH SỐNG SỐT (Survival Analysis)

PHÂN TÍCH SỐT SỐT



PHÂN TÍCH SỐNG SỐT

MABN	NHOM	CANNANG	CD4	THOIGIAN	KETCUC
BN1	1	45	30	3	1
BN2*	1	52	140	16	2
BN3	1	51	150	24	0
BN4	1	46	60	6	1
BN5	1	57	100	6	1
BN6	1	52	20	24	0
BN7	1	54	40	24	0
BN8	1	47	20	3	1
BN9	1	56	100	24	0
BN10	1	65	50	24	0
BN11	1	54	80	8	1

PHÂN TÍCH SỐNG SỐT

AIDS.sav [DataSet1] - SPSS Data Editor

File Edit View Data Transform Analyze Graphs Utilities Add-ons Window Help

5 : MABN BNS

	MABN	NHOM
1	BN1	
2	BN2*	
3	BN3	
4	BN4	
5	BN5	
6	BN6	
7	BN7	
8	BN8	
9	BN9	
10	BN10	
11	BN11	
12	BN12	
13	BN13	
14	BN14	
15	BN15	
16	BN16	
17	BN17	

THOIGIAN KETCUC

3	1
16	2
24	0
6	1
6	1
24	0
24	0
3	1
24	0
24	0
8	1
24	0
24	0

Survival

- Life Tables...
- Kaplan-Meier...
- Cox Regression...
- Cox w/ Time-Dep Cov...

Missing Value Analysis...

Multiple Response

Complex Samples

PHÂN TÍCH SỐNG SỐT

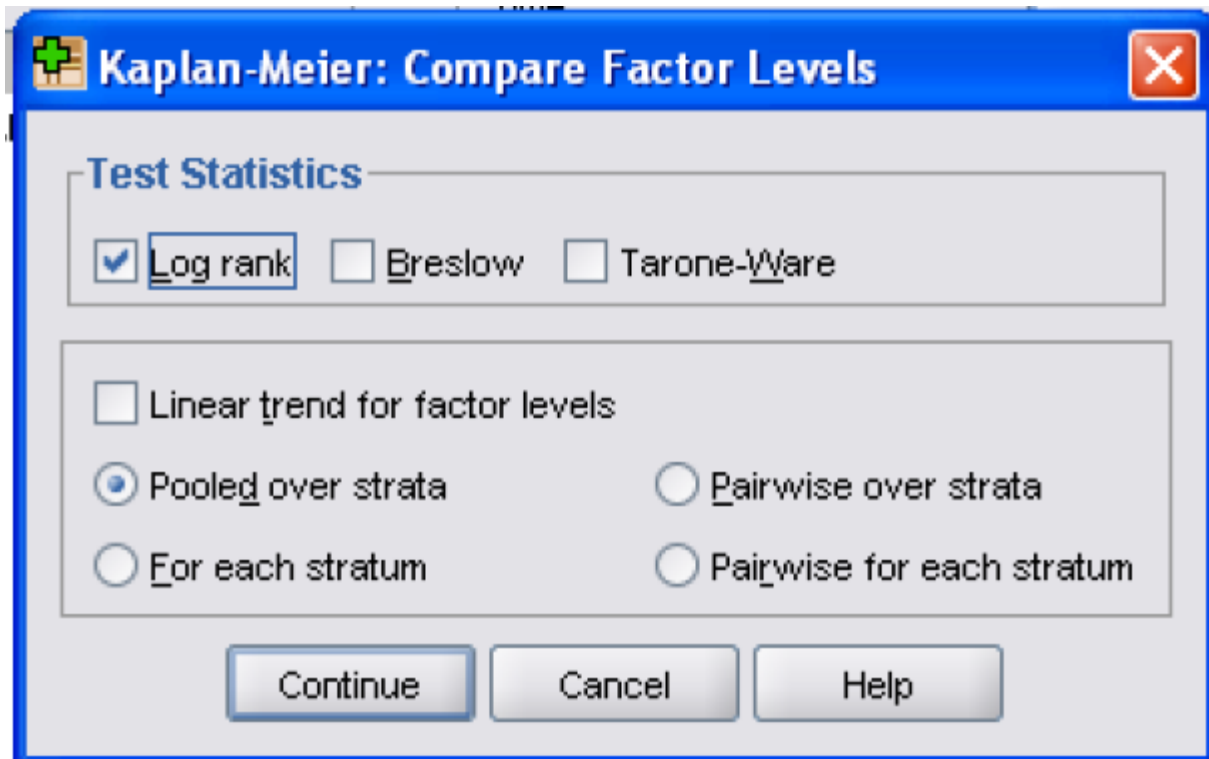
The image shows two overlapping dialog boxes from the SPSS software. The background dialog is titled "Kaplan-Meier" and contains the following fields and controls:

- Time:** A dropdown menu showing "THOIGIAN".
- Status:** A dropdown menu showing "KETCUC(?)".
- Factor:** An empty text field.
- Strata:** An empty text field.
- Label Cases by:** An empty text field.
- Buttons:** "Compare Factor...", "Save...", "Options...", "Define Event...", "OK", "Paste", "Reset", and "Cancel".

The foreground dialog is titled "Kaplan-Meier: Define Event For ..." and is used to specify the event value. It contains:

- Value(s) indicating event has occurred:** A section with three radio button options:
 - Single value:** A text field containing "1".
 - Range of values:** Two text fields with "through" between them.
 - List of values:** A text field.
- Buttons:** "Add", "Change", "Remove", "Continue", "Cancel", and "Help".

PHÂN TÍCH SỐNG SỐT



Kaplan-Meier: Compare Factor Levels

Test Statistics

Log rank Breslow Tarone-Ware

Linear trend for factor levels

Pooled over strata Pairwise over strata

For each stratum Pairwise for each stratum

Continue Cancel Help

Detailed description: This is a standard Windows-style dialog box with a blue title bar. The title bar contains a small icon on the left, the text 'Kaplan-Meier: Compare Factor Levels', and a red close button on the right. The main area is light gray and contains several sections. The first section is titled 'Test Statistics' and contains three checkboxes: 'Log rank' (checked), 'Breslow', and 'Tarone-Ware'. Below this is another section with a checkbox for 'Linear trend for factor levels'. The next section contains four radio buttons arranged in two rows: 'Pooled over strata' (selected), 'Pairwise over strata', 'For each stratum', and 'Pairwise for each stratum'. At the bottom, there are three buttons: 'Continue', 'Cancel', and 'Help'.

PHÂN TÍCH SỐNG SỐT

Means and Medians for Survival Time

NHOM	Mean ^a				Median			
	Estimate	Std. Error	95% Confidence Interval		Estimate	Std. Error	95% Confidence Interval	
			Lower Bound	Upper Bound			Lower Bound	Upper Bound
1	16.300	1.656	13.054	19.546
2	21.756	.833	20.122	23.389
Overall	19.027	.992	17.083	20.970

a. Estimation is limited to the largest survival time if it is censored.

Nhóm 1: Thời gian sống sót trung bình ($16,3 \pm 1,6$ tháng)

Nhóm 2: Thời gian sống sót trung bình ($21,7 \pm 0,8$ tháng)

Overall Comparisons

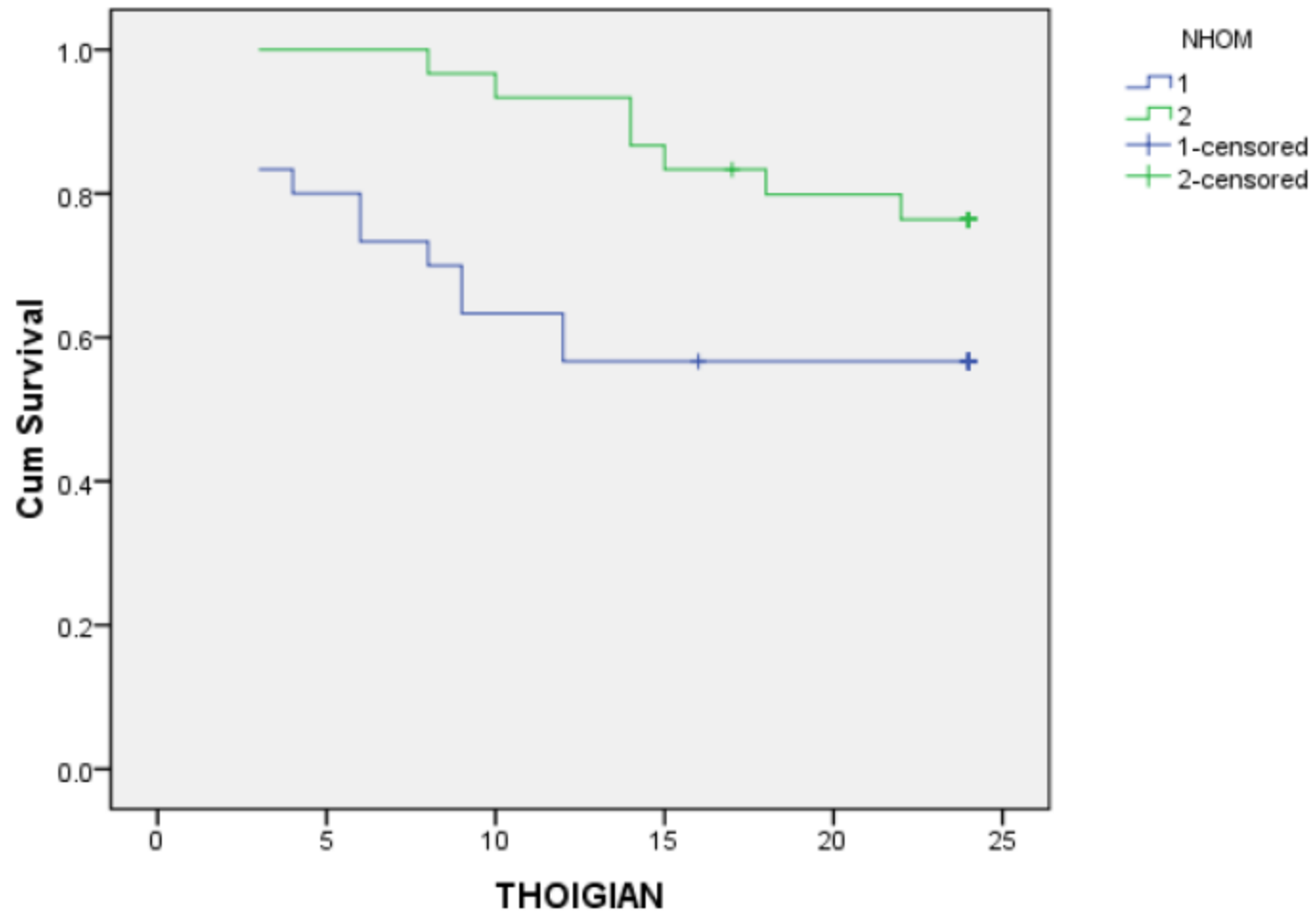
	Chi-Square	df	Sig.
Log Rank (Mantel-Cox)	3.906	1	.048

Test of equality of survival distributions for the different levels of NHOM.

Kiểm định Log Rank: $\chi^2=3,906$, bậc tự do=1 và $p=0,048$

PHÂN TÍCH SỐNG SỐT

Survival Functions



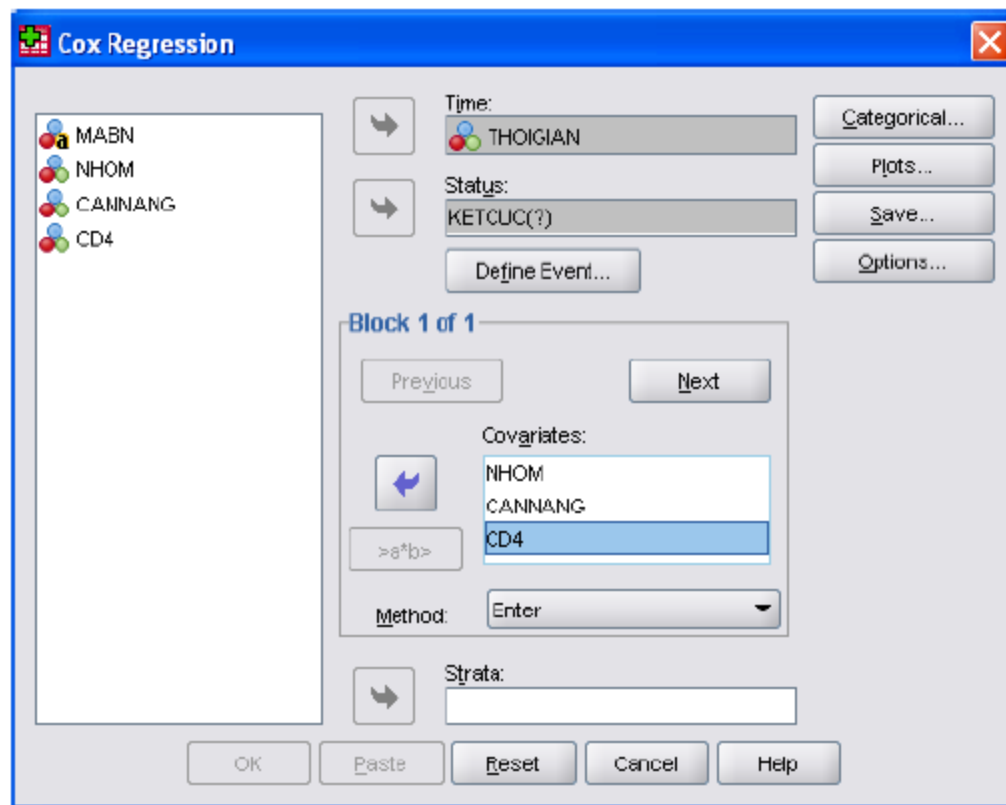
MÔ HÌNH COX

Analyze > Survival > Cox Regression

The screenshot shows the SPSS Data Editor interface for a dataset named 'AIDS.sav'. The 'Analyze' menu is open, and the 'Survival' option is selected, which has opened a sub-menu where 'Cox Regression...' is highlighted. The data table in the background has the following structure:

	MABN	NHOM	THOIGIAN	KETCUC
1	BN1		3	1
2	BN2*		16	2
3	BN3		24	0
4	BN4		6	1
5	BN5		6	1
6	BN6		24	0
7	BN7		24	0
8	BN8		3	1
9	BN9		24	0
10	BN10		24	0
11	BN11		8	1
12	BN12		24	0
13	BN13		24	0
14	BN14			
15	BN15			
16	BN16			

MÔ HÌNH COX



PHÂN TÍCH SỐNG SỐT

Cox Regression: Plots

Plot Type

Survival Hazard Log minus log

One minus survival

Covariate Values Plotted at:

CD4(Mean)
CANNANG(Mean)

Separate Lines for:
NHOM(Cat)

Change Value

Mean Value:

Change

Continue Cancel Help

PHÂN TÍCH SỐNG SỐT

Variables in the Equation

	B	SE	Wald	df	Sig.	Exp(B)	95.0% CI for Exp(B)	
							Lower	Upper
NHOM	-.103	.543	.036	1	.849	.902	.311	2.612
CANNANG	-.196	.053	13.867	1	.000	.822	.741	.911
CD4	-.028	.007	15.870	1	.000	.973	.959	.986

PHÂN TÍCH SỐNG SỐT

Survival Function for patterns 1 - 2

